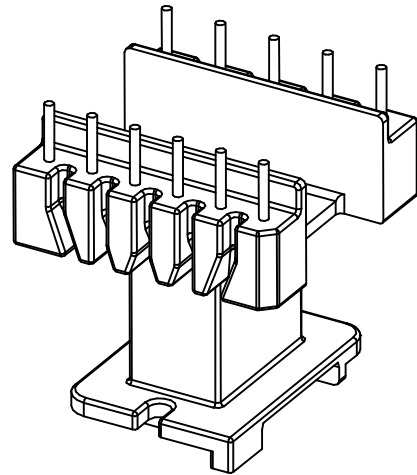
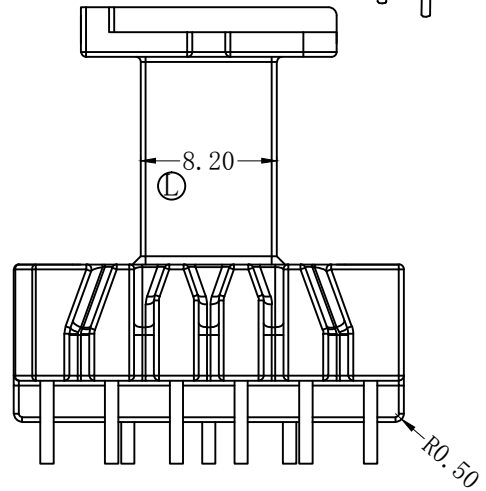
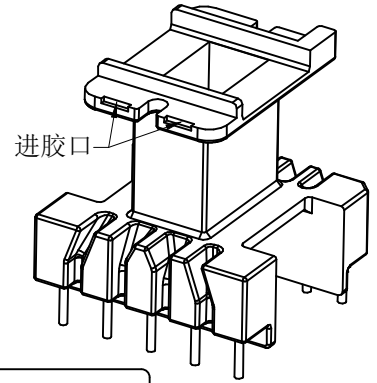
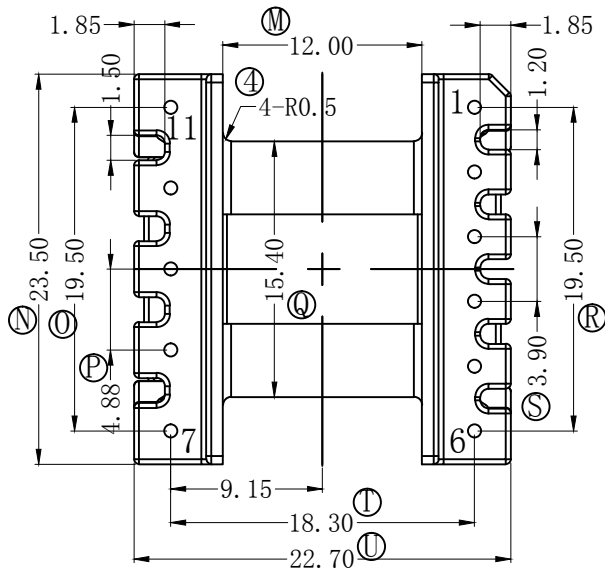
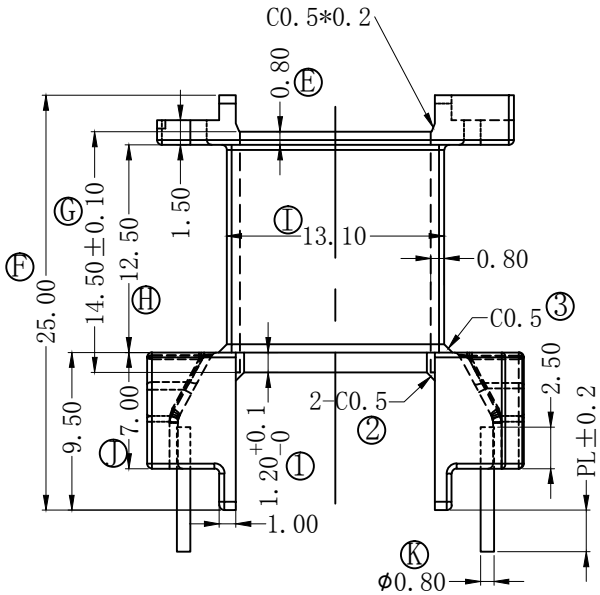
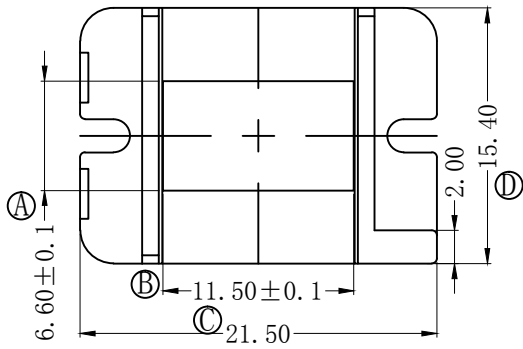


版本	A/1	REV	REVISIONS REC	DATE
		A/1	①处尺寸原1.10改为1.20 <sup>+0.1</sup> <sub>0</sub>	2019.12.19
			②③处修改为C0.5	2019.12.19
			④处新增4-R0.5倒角	2019.12.19
			全部线槽斜度顶部加胶0.3mm	2019.12.19
			⑥尺寸14.40改为14.50	2019.12.19



注：量产模



深圳市搏思康电子有限公司  
SHENZHEN BOSCOM ELECTRONICS CO.,LTD

ADDRESS

深圳市观澜街道石马径社区君新路  
石三工业区146号

TELEPHONE

0755-28032969 28032970 28032971

FAX

0755-28032965

型号  
MODEL NAME

EE-23 (5+6P)

产品编号  
DRAWING NO

B-2310

MATERIAL

PM-9820

SCALE

FIT

DRWING

19/12/2019

DESIGNED

庄永委

APPROVED

PIN MATERIAL:  
CP WIRE

符合ROHS/HF要求  
符合UL94V-0标准

TOLERANCE

0<L<4 ±0.10  
4≤L≤16 ±0.20  
16以上 ±0.30  
壁厚: ±0.10  
PIN径: ±0.05