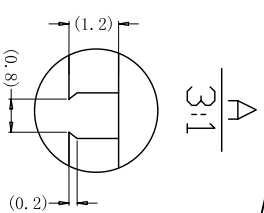
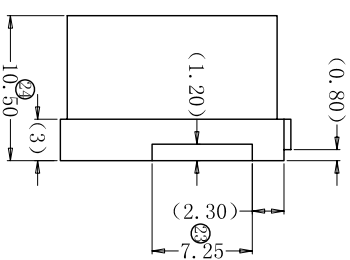
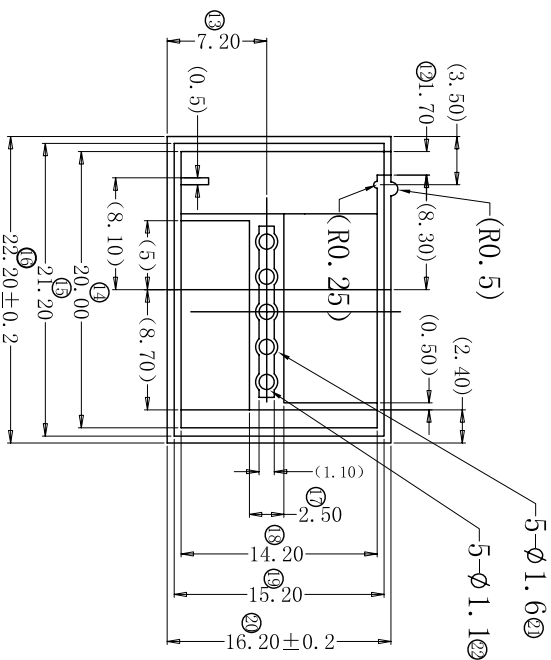
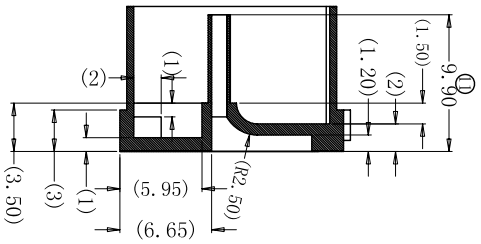
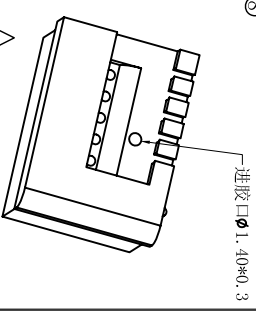
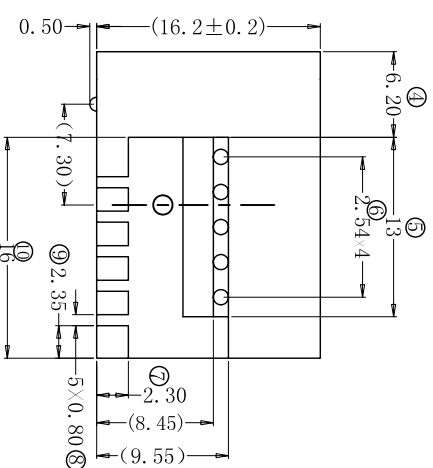
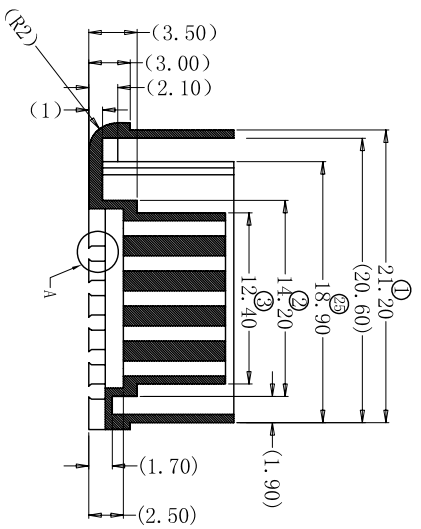
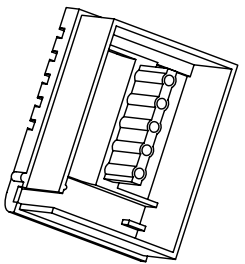


REV.	REVISIONS REC.	DATE



技术要求:

1. 重点尺寸: 标○为重点管控尺寸, 括号内为参考尺寸, 参考尺寸不作为来料管控, 仅供应商内部管控
2. 成型后外观平滑无变形、无杂质、水口、批锋清理干净
3. 颜色: 绿色。
4. 脱模斜度选最小, 保证外形不超差。
5. 浇口放在壳体内部, 不得开在表面及边缘。
6. 模具符合MA900/260要求。



深圳市博思康电子有限公司
SHENZHEN BOSCOM ELECTRONICS CO.,LTD

ADDRESS	深圳市观澜街道石马径社区 君新路石三工业区146号	客户文件编号	WI-D06F06-J-0233
TELEPHONE	0755-28032969 28032970 28032971	MODEL NAME	RD1002外壳1
FAX	0755-28032965	PRODUCT NO	B-C1002
		MATERIAL	PA66G15FRNC202
		SCALE	FIT
		DRWN BY	04/12/2019
		DESIGNED	张直洪
		APPROVED	
		PIN MATERIAL:	符合ROHS/IE要求
		CP WIRE	符合UL94-0标准
		TOLERANCE	±0.10 0.2<L<30 30<L<120
			±0.08 ±0.20 ±0.30 ±0.05 ±0.02