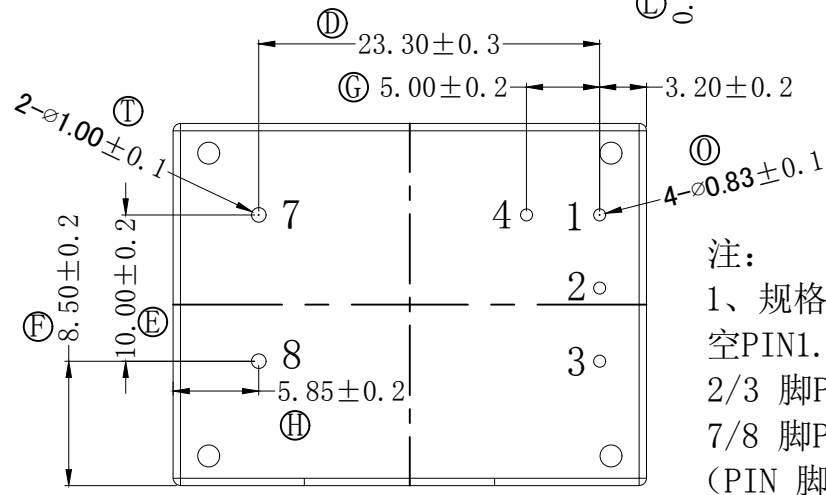
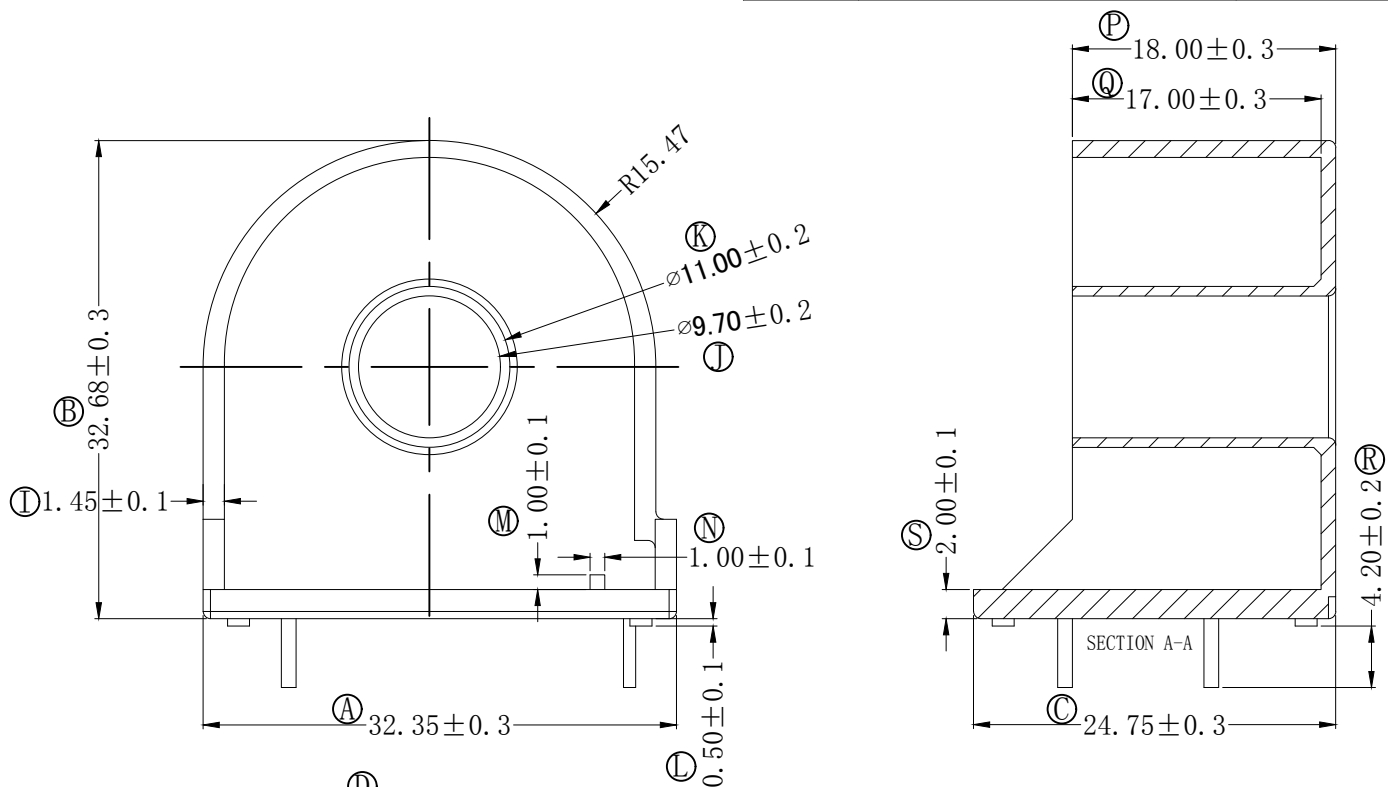
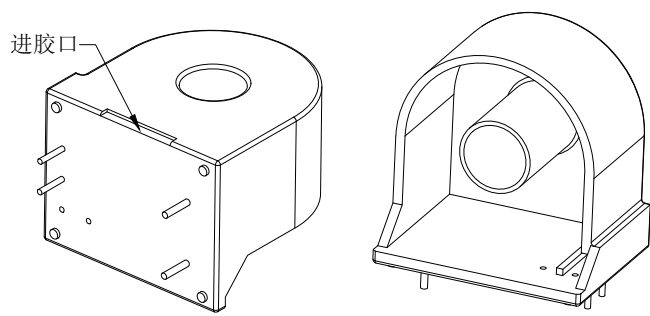



版本	A/0	REV	REVISIONS REC	DATE



- 注:
- 规格: BASE (4+2PIN), 空PIN1.4 留孔;  
2/3 脚PIN 径为 $0.83 \pm 0.1$ mm;  
7/8 脚PIN 径为 $1.00 \pm 0.1$ mm;  
(PIN 脚镀层要求: 引脚基材为CP线, 中间层镀镍 $1.27-7.60\mu\text{m}$ , 表面层镀锡 $3.0\mu\text{m}$  MIN;  
IQC 来料检验须核对供方报告)
  - 材质: PM-9820
  - 阻燃等级: UL94V-0
  - 其余检验项目按《骨架检验规范》执行。
  - 要求无毒



 <b>深圳市搏思康电子有限公司</b> SHENZHEN BOSCOM ELECTRONICS CO., LTD ADDRESS: 深圳市龙华区观澜街道牛湖社区君新路164号 TELEPHONE: 0755-29673660 29673519	型号 MODEL NAME <b>BASE (4+2P)</b>		产品编号 DRAWING NO <b>B-B228</b>	
	MATERIAL	PM-9820	PIN MATERIAL	CP WIRE
<b>广东搏思远科技有限公司</b> Guangdong Bosyuan Technology Co., Ltd ADDRESS: 河源市高新区富民工业园A区联体厂房A栋南栋 TELEPHONE: 0762-2820657 2820658 2820659 2820660	SCALE	FIT	TOLERANCE	
	DRWING	09/04/2023	0 < L ≤ 4	±0.10
	DESIGNED	庄永委	4 < L ≤ 16	±0.20
	APPROVED		16 < L ≤ 64	±0.30