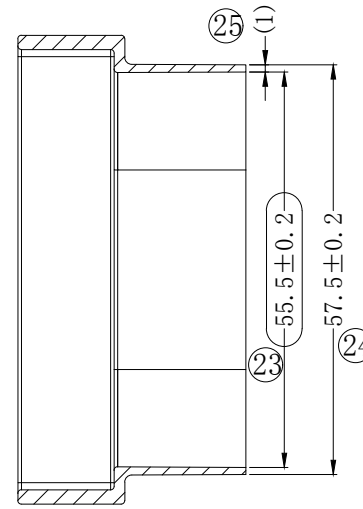
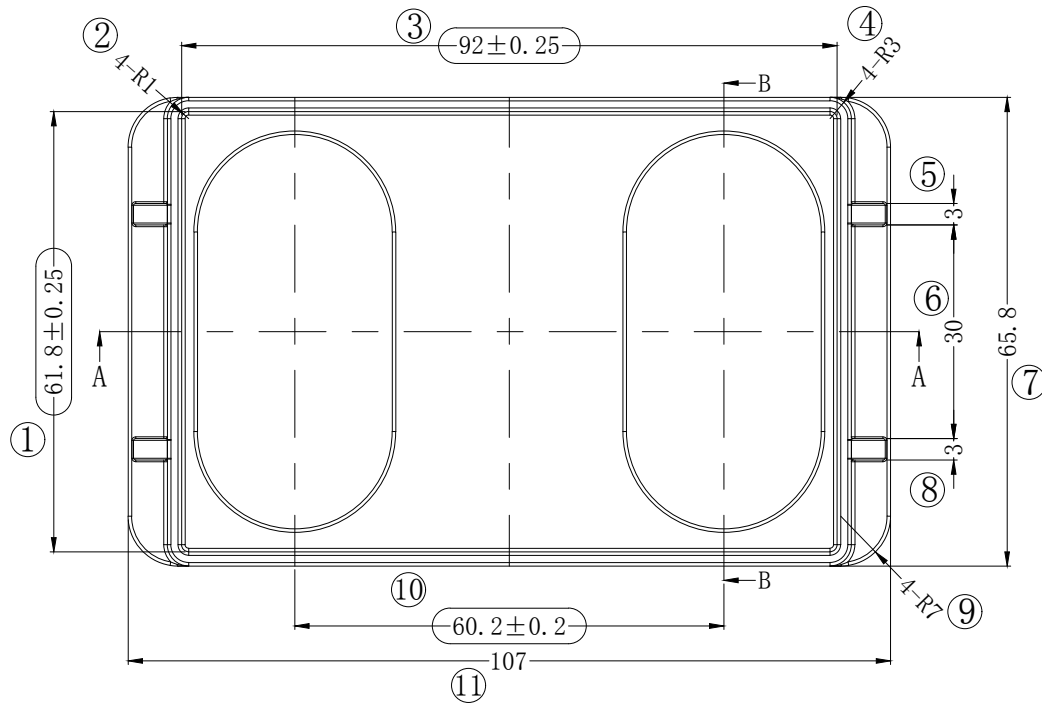
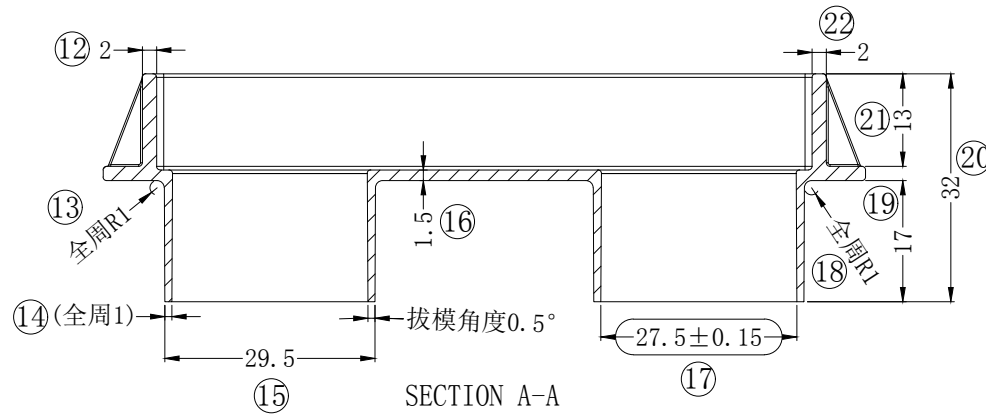
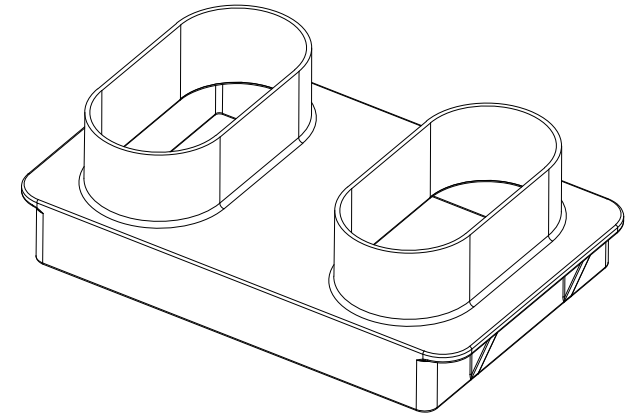


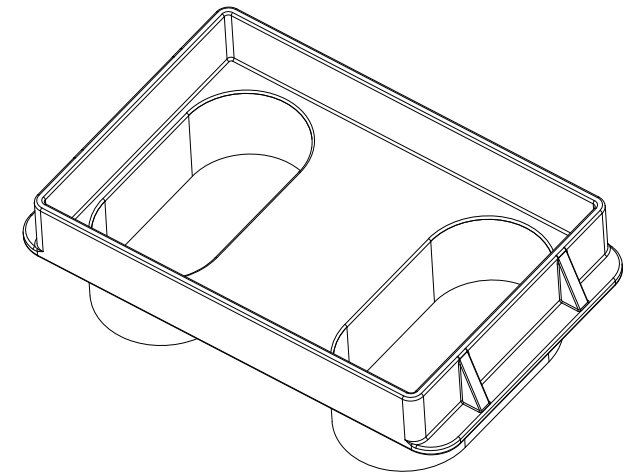
版本	A/O	REV.	REVISIONS REC.	DATE



SECTION B-B



SECTION A-A



注：Note

- 1、未标示R角尺寸为0.5
Unless otherwise specified, The corner is made about R0.5
- 2、不允许使用脱模剂
Release agent is forbidden.
- 3、未指定的拔模角度使用公差内最小角度
Unless otherwise specified, An omission incline is assumed to be the most small by Clearance.
- 4、删除显著的缩痕、毛刺、熔合线、充填不足。
Delete remarkable sink mark and burr ,weld, short mold.
- 5、标示"○"为重要尺寸，每次必检
Confirm the important management size of the "○" sign at the acceptance.
- 6、未注公差按照图示公差表取值
Unindicated tolerances refer to the tolerance table shown
- 7、未注拔模角度为0.5°
The unmarked draft angle is 0.5°
- 8、再生材料的使用不超过25%。
The usage rate of a reworked material is 25% or less.
- 9、制作时请参考2D和3D图
Refer to 2D and 3D data for production.

深圳市搏思康电子有限公司 SHENZHEN BOSCOM ELECTRONICS CO.,LTD		型号 MODEL NAME	产品编号 DRAWING NO
ADDRESS: 深圳市龙华区观澜街道牛湖社区君新路164号 TELEPHONE: 0755-29673660 29673519		Base	B-B231
广东搏思远科技有限公司 Guangdong Bosyuan Technology Co.,Ltd		MATERIAL	PIN MATERIAL
ADDRESS: 河源市高新区富民工业园A区联体厂房A栋南栋 TELEPHONE: 0762-2820657 2820658 2820659 2820660		SCALE	CP WIRE
		DRWING	TOLERANCE
		DESIGNED	0<L≤4 ±0.08
		APPROVED	4<L≤20 ±0.10
			20<L≤50 ±0.15
			50<L≤200 ±0.25